

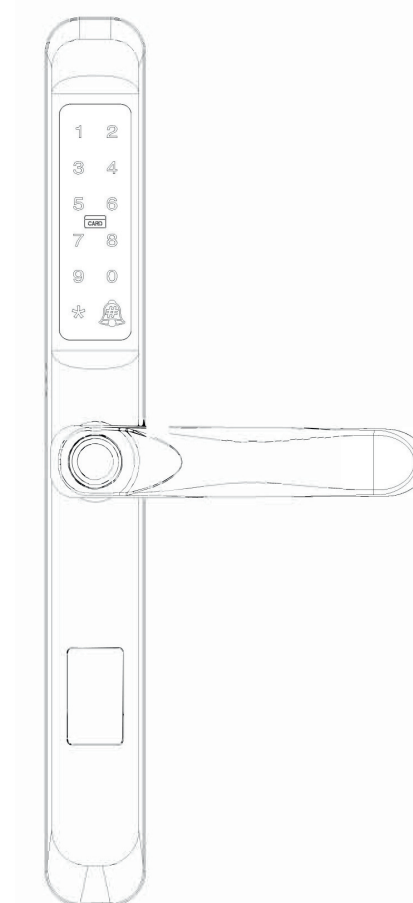


THANK YOU



USER MANUAL

SMART DOOR LOCK LHL-SA

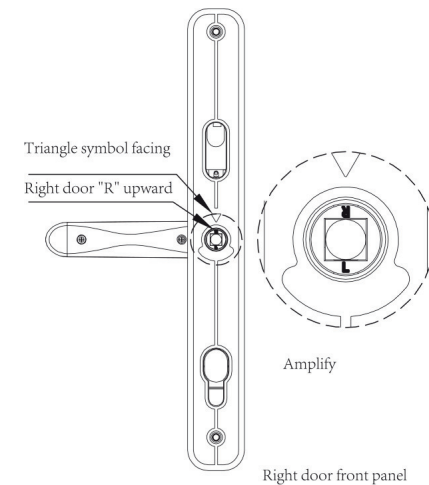


Scan to download the TTLOCK APP Or search Google Play or Apple Store for “TTLOCK”

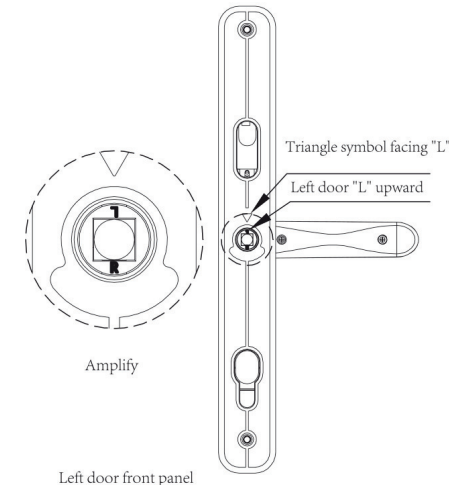


Schematic diagram of X5 panel installation and adjustment direction

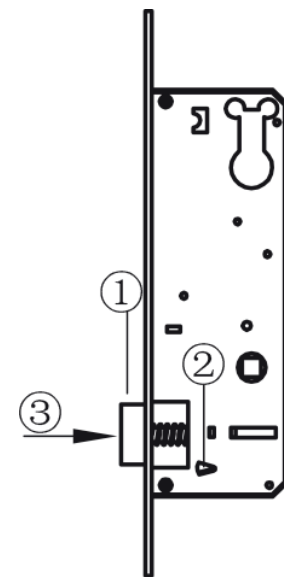
Right door clutch direction adjustment:



Left door clutch direction adjustment:



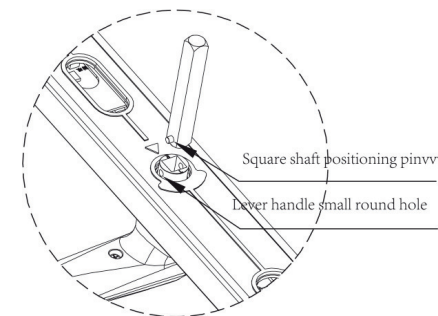
Left and right reversing of lock body:



Methods as below:

1. Turn the lock body upside down, with the facing down.
2. Let the latch bolt stop block lean down.
Installation method: Press the positioning pin latch bolt of the square shaft with your fingers, facing the direction of the small round hole, and insert it
3. Press the latch bolt to the bottom of the lock body with into the small round hole, the positioning pin your fingers and rotate it 180 degrees.
4. Release the latch bolt, let the latch bolt pop out along will pop out and will not fall off when stuck.
the latch bolt hole, and reverse the lock body to install.

Installation of front panel shaft:

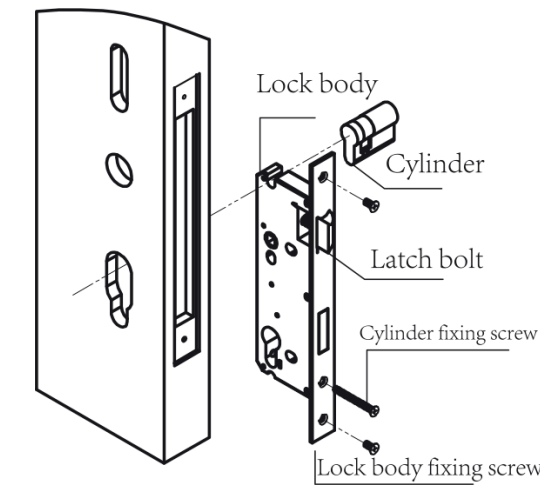


Installation method:

Press the positioning pin of the square shaft with your fingers, facing the direction of the small round hole, and insert it into the small round hole, the positioning pin will pop out and will not fall off when stuck.

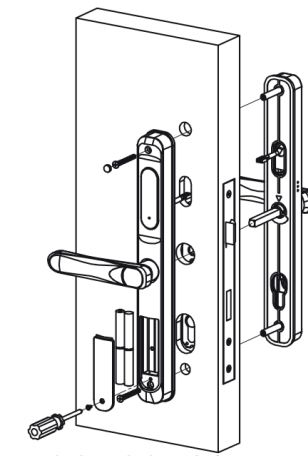
X5 door lock installation diagram

Lock body installation:



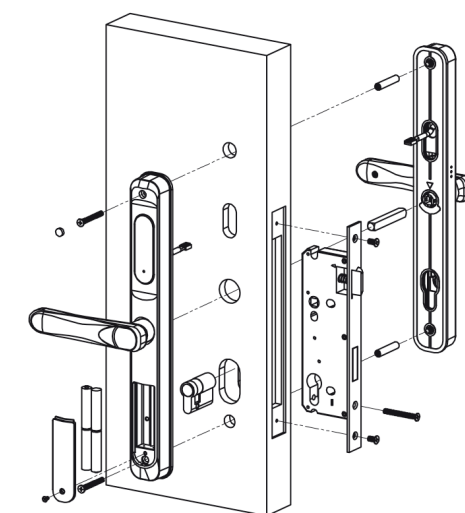
Installation method: the small latch bolt is upward, and the inclined plane direction corresponds to the inner and outer door opening. Install the door frame, fix it with screws, and then install the cylinder. The key hole faces the front panel, insert the key, rotate the key to check whether the bolt is retracted smoothly, and then fix the screw.

Rear panel installation:



Installation method: cut the large shaft to an appropriate length according to the thickness of the door, install the front panel and pass the square shaft through the lock body. Insert the power cord plug of the rear panel and the plug of the front panel. After the lever handle of the rear panel is sleeved into the square shaft, fix it with M5 cross countersunk head screw, install the battery, cover the battery cover, fix it with screws, and plug it into the upper screw hole with waterproof rubber particles.

Installation exploded diagram:



Fingerprint + Card swiping + Password

I. Product advantages and features

Can use fingerprint, card and password to open door
ntelligent voice menu navigation, human-computer interaction,
humanized operation A variety of door opening modes are available,
which strengthens the security level of the door lock,
Add and delete users using number-based management
Combined unlocking and dual functions ensure the safety of the door lock
With anti-peeping password functionWith electronic anti-lock function,
after the anti-lock, the administrator can verify that the lock can be
unlocked, and ordinary users cannot unlock
Self-check function after power on
Wechat Mini Program temporary password unlocking function
All components are international famous brand products with stable and
reliable quality.
The door lock modules are waterproof, moisture-proof and mildew proof.
The door lock modules have been tested for high and low temperature,
vibration and aging to adapt to the harsh environment.

Power supply	6V (4 dry cells)
Quiescent current	< 60 μ a
User information	< = 100 groups (the first group 00 is the administrator, and 01 and subsequent numbers are users)
Number of door opening keys	There are 100 groups of fingerprints / passwords / cards in the system, which are dynamically distributed.
Password length	6-10 bits
Resolution ratio	500DPI
False reject rate	\leq 0.15%
False accept rate	\leq 0.00004%
Operating temperature	-25 $^{\circ}$ C \sim 60 $^{\circ}$ C
Relative humidity	20% \sim 93%

III Function and operation

1.Initial state

In the initial state, any fingerprint, password and magnetic card can open the door; Press the initialization button on the setting board for 5 seconds to restore the device to its initial state.

2.Menu

2.1 In the initial state, tap the keyboard gently to light up the keyboard, and press the *#" key to enter the setting menu;

2.2Non initial state

Tap the keyboard to light up the keyboard, press the *#" key, input the entered administrator information according to the voice prompt, and the setting menu appears

- **Note:** press *#" to return to the previous layer; Press *#" o exit to confirm

3.Administrator settings

3.1 Input administrator informationPress * # to enter the setting menu, and then carry out relevant operations in sequence according to the voice broadcast sequence:

1: Voice broadcast: "1 create new user, 2 delete user, 3 system settings" --Press key 1

2: Voice broadcast: "Operation succeeded, user 00, please enter the secret key (fingerprint password/card)"

--Type in the administrator's fingerprint/password/card

Note: the administrator has only one number 00 (multiple fingerprints / passwords / cards can be input under the identity of 00)

3.2Delete administrator

Press the setting button for 5 seconds to restore the factory state.

4.Ordinary user settings

4.1 Input ordinary users

Press* # to enter the setting menu, and then carry out relevant operations in sequence according to the voice broadcast sequence:

III Function and operation

1: Voice broadcast: "1 create new user, 2 delete user, 3 system settings"
--Press key 1

2: Voice broadcast: "Operation succeeded, user Ox, please enter the secret key (fingerprint / password / card)"

--Type in the user's fingerprint/password/card

4.2Delete ordinary users

Press * # to enter the setting menu, and then carry out relevant operations in sequence according to the voice broadcast sequence:

1: Voice broadcast: "1 create new user, 2 delete user, 3 system settings"

--Press key 2

2: Voice broadcast: "1 please type in the user number"

--Type in the user number to delete (e.g. 01)

3: Voice broadcast: "Operation succeeded"

5.System settings

5.1Time setting (e.g. 20:08 PM, August 8th, 2008)

Press * # to enter the setting menu, and then carry out relevant operations in sequence according to the voice broadcast sequence:

1: Voice broadcast: "1 create new user, 2 delete user, 3 system settings"

--Press key 3

: Voice broadcast: "1 time setting, 2 volume adjustment, 3 verification mode, 4 language selection, 5 installation settings"

-Press key 1

3: Voice broadcast: "please type in two digit year, two digit month and two digit date"

--Type in 08 (the first two digits of the year are automatically defaulted to 20XX)

4: Voice broadcast: "please type in two digit clock and two digit minute"

--Type in 20 08

Note: the time must be in 24-hour system

5.2Volume adjustment

Press * # to enter the setting menu, and then carry out relevant operations in sequence according to the voice broadcast sequence:

1: Voice broadcast: "1 create new user, 2 delete user, 3 system settings"

--Press key 3

III Function and operation

2: Voice broadcast: "1 time setting, 2 volume adjustment, 3 verification mode, 4 language selection, 5 installation settings"

-Press key 2

3: Voice broadcast: "1 reduce the volume, 2 increase the volume"

--Select as needed

5.3Unlock mode

a Verification mode

Press * # to enter the setting menu, and then carry out relevant operations in sequence according to the voice broadcast sequence:

1: Voice broadcast: "1 create new user, 2 delete user, 3 system settings"

--Press key 3

2: Voice broadcast: "1 time setting, 2 volume adjustment, 3 verification mode, 4 language selection, 5 installation settings"

--Press key 3

3: Voice broadcast: "1 single verification unlocking, 2 double verification unlocking" --Select as needed

5.4Language selection

Press * # to enter the setting menu, and then carry out relevant operations in sequence according to the voice broadcast sequence:

1: Voice broadcast: "1 create new user, 2 delete user, 3 system settings"

--Press key 3

2: Voice broadcast: "1 time setting, 2 volume adjustment, 3 verification mode, 4 language selection, 5 installation settings"

--Press key 4

3: Voice broadcast: "1 Chinese, 2 English"

--Select as needed

III Function and operation

6.Anti prying setting

Press the shortcut key 4# to enter the setting menu, and the voice broadcast "please input the administrator authorization"

1: Voice broadcast: 1 Open the anti prying, 2 Close the anti prying.

--Select as needed

7.Wechat Mini Program temporary password unlocking

Step 1: open Wechat

Step 2: Scan the QR code

Step 3: Please type in the management password

Step 4: Please type in a valid time

Step 5: after the temporary password is generated, the door can be opened within the effective time with this group of passwords

Note:

1.The first group of administrators must set the format as password, which cannot be fingerprint or card

2. The time must be set to be consistent with the time of the mobile phone and in 24-hour system

Warm tip: if you don't have this QR code, you can also search "Wechat Mni Program temporary password unlocking" in mobile Wechat App, and then click the temporary password generator to enter this interface.

III Function and operation

IV Networking operation instructions+

Step 1: Register the administrator (for example, the registered administrator password is 123456789)

Step 2: After inputting "1#" on the lock motherboard, voice broadcast "please enter administrator authorization"

Step 3: Input: "123456789" administrator authorization

Step 4: The lock motherboard automatically enters the networking state

V Shortcut key description

1# enter the networking state, 2# delete the configured network, 3# or the doorbell, or enter the request for remote unlocking, 4# enter the anti prying setting